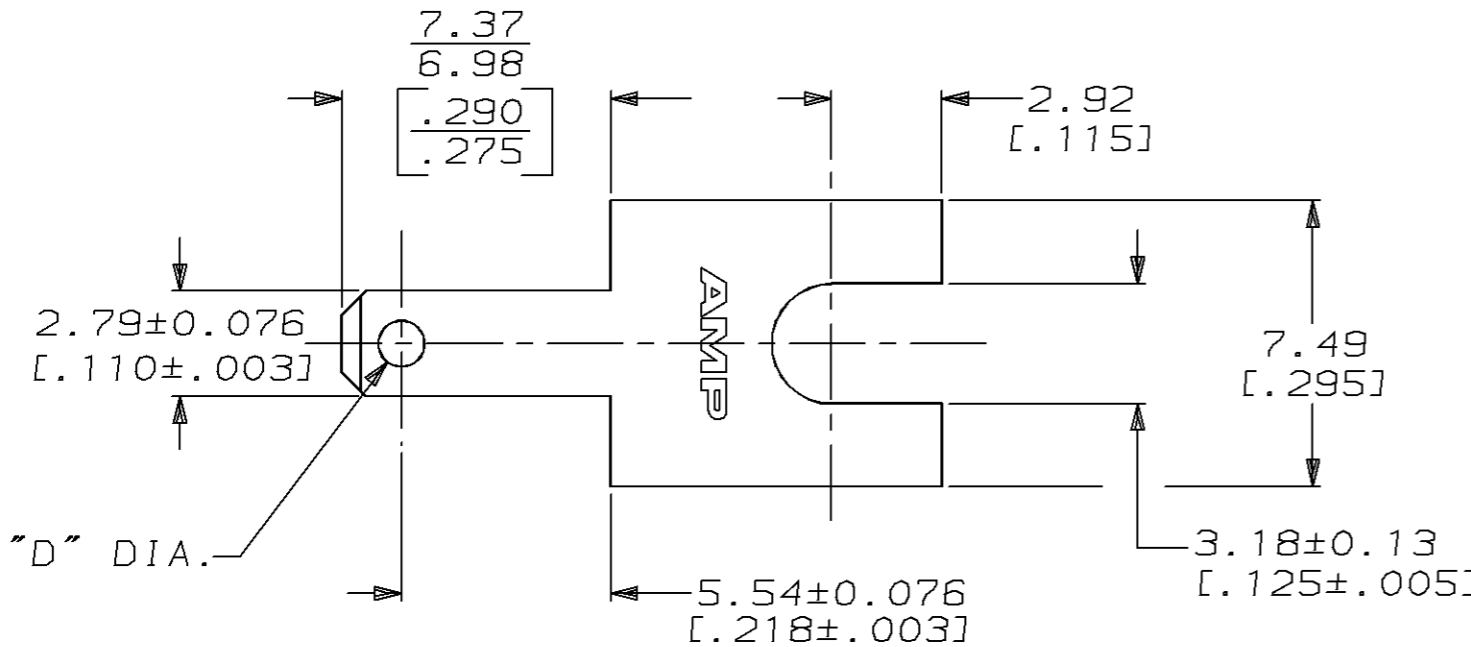
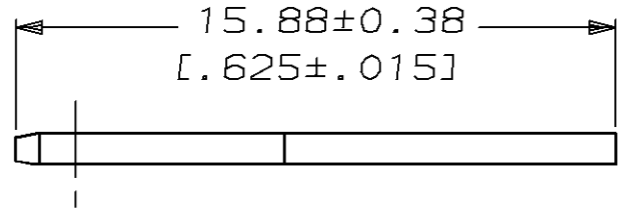


THIS DRAWING IS UNPUBLISHED. RELEASED FOR PUBLICATION, 19 .  
 © COPYRIGHT 19 BY AMP INCORPORATED. ALL INTERNATIONAL RIGHTS RESERVED.

LOC	DIST	P	F	ZONE	LTR	DESCRIPTION	DATE	APPD
AF	50				P	REACT 1-62061-0 PER 0L10-0075-97	2/14/97	JR/PD



- 1 SUPPLIED IN LOOSE PIECE.
- △2 DIMPLE ON BOTH SIDES.
- △3 DIMPLE ON ONE SIDE ONLY.
- △4 TIN PLATE 0.002032 [.000080] MIN.



	NO HOLE OR DIMPLE	TIN △4	0.46±0.018 [.018±.0007]	BRASS	1-62061-0
OBSOLETE	△2 1.22 [.048] DIMPLE	NONE	0.81±0.007 [.032±.0003]	BRASS	<del>62061-9</del>
OBSOLETE	△2 1.22 [.048] DIMPLE	NONE	0.51±0.007 [.020±.0003]	BRASS	<del>62061-8</del>
OBSOLETE	△2 1.22 [.048] DIMPLE	NONE	0.41±0.007 [.016±.0003]	BRASS	<del>62061-7</del>
OBSOLETE	△3 1.22 [.048] DIMPLE	NONE	0.81±0.007 [.032±.0003]	BRASS	<del>62061-6</del>
OBSOLETE	△3 1.22 [.048] DIMPLE	NONE	0.51±0.007 [.020±.0003]	BRASS	<del>62061-5</del>
OBSOLETE	△3 1.22 [.048] DIMPLE	NONE	0.41±0.007 [.016±.0003]	BRASS	<del>62061-4</del>
	1.22 [.048] HOLE	NONE	0.41±0.007 [.016±.0003]	BRASS	62061-3
	1.22 [.048] HOLE	NONE	0.81±0.007 [.032±.0003]	BRASS	62061-2
	1.22 [.048] HOLE	NONE	0.51±0.007 [.020±.0003]	BRASS	62061-1
	"D" DIA ±0.07 [.003]	FINISH	MATERIAL		PART NO

DO NOT SCALE PRINT, UNLESS SPECIFIED  
 DIMENSIONS IN mm [INCHES]  
 TOLERANCES ON:  
 2 PLC DEC ± 0.25 [.010]  
 3 PLC DEC ± -  
 ANGLES ± -

MATERIAL  
 SEE TABLE

FINISH  
 SEE TABLE

DR 9/9/94  
 JR RUTH  
 CHK 9/9/94  
 MS FEHER  
 APPD 9/9/94  
 P DESANTIS  
 APPD 9/9/94  
 R REINER  
 PRODUCT SPEC -  
 APPLICATION SPEC -  
 WEIGHT -

**AMP** AMP Incorporated  
 Harrisburg, PA 17105-3608

NAME  
 TAB, FASTON, 2.79 [.110] SERIES

SIZE	CAGE CODE	DRAWING NO
B	00779	C-62061
SCALE	SHEET	
5:1	1 OF 1	

THIS DRAWING IS A CONTROLLED DOCUMENT FOR AMP INCORPORATED. IT IS SUBJECT TO CHANGE AND THE CONTROLLING ENGINEERING ORGANIZATION SHOULD BE CONTACTED FOR THE LATEST REVISION.