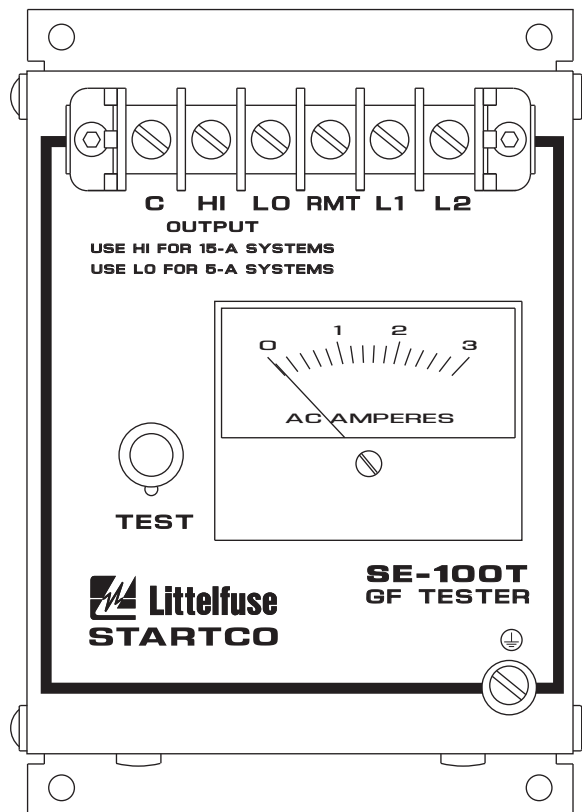


SE-100T MANUAL
GROUND-FAULT-RELAY TESTER
REVISION 5-A-120513



Copyright © 2013 by Littelfuse Startco.

All rights reserved.

This page intentionally left blank.

TABLE OF CONTENTS

SECTION	PAGE
1. General.....	1
2. Installation and Operation.....	1
3. Technical Specifications	3
4. Ordering Information.....	3
5. Warranty	3
Appendix A SE-100T Revision History.....	4

LIST OF FIGURES

FIGURE	PAGE
1. SE-100T Outline and Mounting Details	1
2. Typical Application	2

DISCLAIMER

Specifications are subject to change without notice. Littelfuse Startco is not liable for contingent or consequential damages, or for expenses sustained as a result of incorrect application, incorrect adjustment, or a malfunction

This page intentionally left blank.

1. GENERAL

The SE-100T is a ground-fault-relay tester for 5-A and 15-A resistance-grounded systems. The SE-100T has an output ammeter, a test pushbutton, low (LO) and high (HI) outputs, and a remote-test input (RMT). Test currents of 0.65 A (LO) or 2.75 A (HI) are provided for injection in window-type current sensors. Multiple CT wraps can provide a window current that is a multiple of the ammeter reading.

2. INSTALLATION AND OPERATION

SE-100T outline and mounting details are shown in Fig. 1. Typical connections are shown in Fig. 2.

Connect supply voltage to L1 and L2. Connect chassis bonding terminal \oplus to ground. Loop a test wire through the windows of the ground-fault CT's. Connect one end of the test wire to terminal C and the other end to terminal LO or terminal HI for a test current of 0.65 or 2.75 A. For remote operation, connect a normally open contact between terminals L1 and RMT. To test ground-fault-relay operation, press the test pushbutton for an interval that is longer than the time-delay setting of the relay or relays being tested. If precise current adjustment or a timed output is required, use the SE-400 ground-fault-relay test unit.

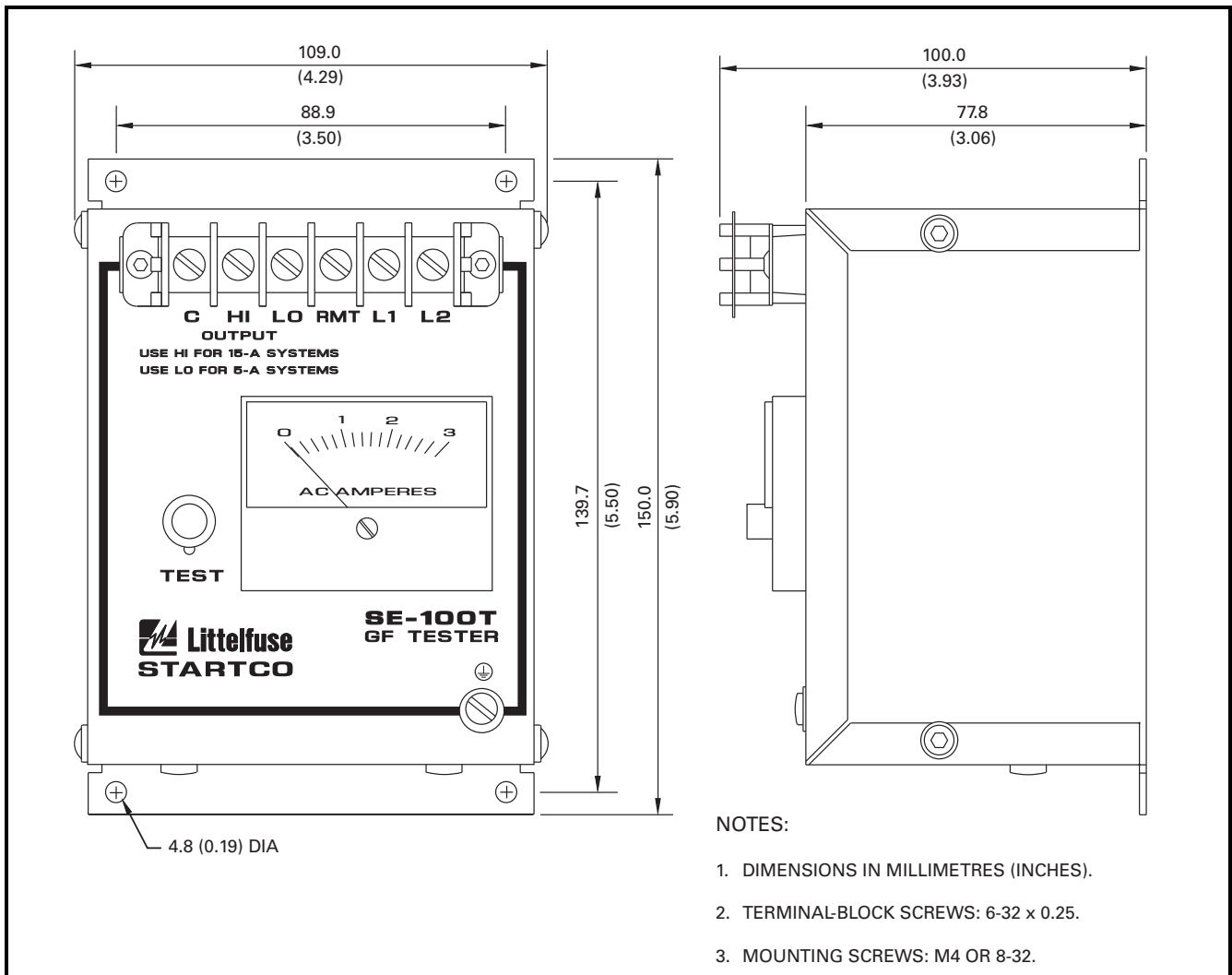


FIGURE 1. SE-100T Outline and Mounting Details.

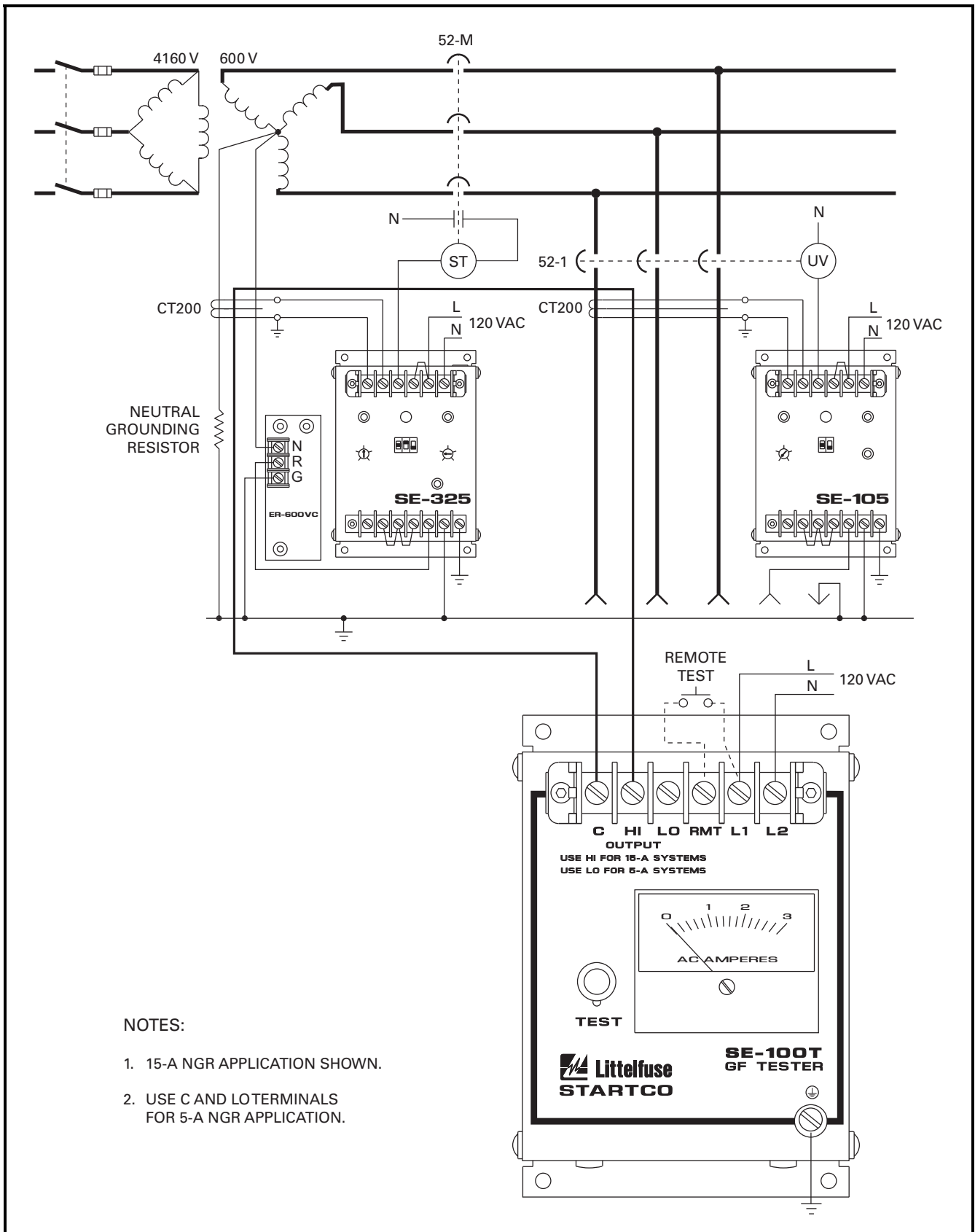


FIGURE 2. Typical Application.

3. TECHNICAL SPECIFICATIONS

Supply: 120 Vac $\pm 10\%$, 60 Hz⁽¹⁾,
30 VA

Output:
LO⁽²⁾ 0.65 \pm 0.1 A Continuous
HI⁽²⁾ 2.75 \pm 0.5 A Thermally
Limited
Open-Circuit Voltage 6.3 Vac
Maximum Burden 0.5 Ω

Environment:
Operating Temperature -40 to 50°C (-40 to 122°F)
Storage Temperature -55 to 80°C (-67 to 176°F)

Dimensions:
Height 150 mm (5.9")
Width 109 mm (4.3")
Depth 100 mm (4.0")

Shipping Weight 1 kg (2.2 lb)

Certification CSA, Canada and USA



NOTES:

- ⁽¹⁾ The SE-100T has been verified to meet the output specifications at 50 Hz, however the official CSA rating is only at 60 Hz.
- ⁽²⁾ Supply voltage and output burden dependent.

4. ORDERING INFORMATION

Ground-Fault-Relay Tester:

SE-100T

Accessories:
SE-410 10-Position Selector Switch

5. WARRANTY

The SE-100T Ground-Fault-Relay Tester is warranted to be free from defects in material and workmanship for a period of five years from the date of purchase.

Littelfuse Startco will (at Littelfuse Startco's option) repair, replace, or refund the original purchase price of an SE-100T that is determined by Littelfuse Startco to be defective if it is returned to the factory, freight prepaid, within the warranty period. This warranty does not apply to repairs required as a result of misuse, negligence, an accident, improper installation, tampering, or insufficient care. Littelfuse Startco does not warrant products repaired or modified by non-Littelfuse Startco personnel.

**APPENDIX A
SE-100T REVISION HISTORY**

MANUAL RELEASE DATE	MANUAL REVISION	PRODUCT REVISION (REVISION NUMBER ON PRODUCT LABEL)
December 5, 2013	5-A-120513	03

MANUAL REVISION HISTORY

REVISION 5-A-120513

SECTION 3

Supply voltage frequency note added.

APPENDIX A

Revision history added.

PRODUCT REVISION HISTORY

REVISION 03

Current build.