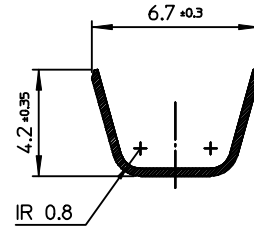
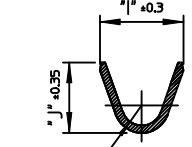


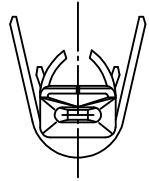
SECTION A-A



SECTION A-A  
(35040-9502)



SECTION B-B



NOTES.

1. MATERIAL : BRASS
2. FINISH : PRE-TIN PLATED  
0.8~1.8μm, TIN(Sn) OVER  
0.3~0.8μm, COPPER(Cu) OVERALL
3. PRODUCT SPECIFICATION : PS-35127-001
4. PACKAGING SPECIFICATION : PK-35040-001
5. MATES WITH
  - MALE HOUSING : 35127-\*\*00
  - FEMALE TERMINAL : 35028 SERIES

[TABLE]

H	I	J	K	L	M	MATERIAL NO.	ENG NO.	APPLICABLE WIRE RANGE
0.8	3.0	3.2	0.8	3.35	3.55	350409802	35040-9802	AWG #20~#18[SINGLE WIRE]
0.8	3.2	3.5	1.55	5.4	5.3	350409000	35040-9000	AWG #16~#14[SINGLE WIRE]
0.8	4.3	3.2				350409502	35040-9502	AWG #20~#18[DOUBLE WIRES]

REVISED EC NO: KOR2014-0036 DRWN:SKCHO 2013/09/26 CHKD: APPR:YSK/1102 2013/10/02	QUALITY SYMBOLS	GENERAL TOLERANCES (UNLESS SPECIFIED)	DIMENSION STYLE	SCALE	DESIGN UNITS	THIRD ANGLE PROJECTION
	▽=0 Ⓢ=0	mm INCH 4 PLACES ± --- ± --- 3 PLACES ± --- ± --- 2 PLACES ± 0.2 ± --- 1 PLACE ± 0.3 ± --- ANGULAR ± 1 °	MM ONLY	SCALE	METRIC	
	DESCRIPTION	DRAFT WHERE APPLICABLE MUST REMAIN WITHIN DIMENSIONS	DRAWN BY DATE	TITLE		
	REV		YJ.KIM 1992/08/29	.070 MALE TERMINAL		
1			CHECKED BY DATE	MOLEX INCORPORATED		
			BK.CH01 1992/08/29	SD-35040-001		
			APPROVED BY DATE	SHEET NO.		
			CW.LEE 1992/08/29	1 OF 01		
			MATERIAL NO.	DOCUMENT NO.		
			SEE TABLE	SD-35040-001		
			SIZE	THIS DRAWING CONTAINS INFORMATION THAT IS PROPRIETARY TO MOLEX INCORPORATED AND SHOULD NOT BE USED WITHOUT WRITTEN PERMISSION		
			A3			